



The Chemours Company FC LLC
Titanium Technologies Florida Plant
5222 Treat Road, PO Box 753
Starke FL 32091

December 30, 2022

Mr. Chris Suarez
Mining and Mitigation Program
2600 Blair Stone Road, MS 3577
Tallahassee, FL 32399-2400

Via Email: chris.suarez@floridaDEP.gov

RE: The Chemours Company FC LLC
TRS Stormwater Pond 1 Release
Incident No. 2022-10599

Dear Mr. Suarez:

The following provides additional information pertaining to the discharge of process water/stormwater from Stormwater Pond 1 on December 25-26, 2022. Per the notification to the Department on December 26, 2022, a release of approximately 510,000 gallons from Stormwater Pond 1.

On December 25th, the Mill was recirculating water in preparation to start up operations. Upon observing water leaving the stormwater pond (8:15 pm) through the outfall, the mill was immediately shut down. Instrumentation within the mill was not showing that any areas of the plant were overflowing. It appears that there were impacts to the water control valves and pumps due to the freezing temperatures the State was experiencing.

A pump was installed by 10:00 pm and the water was being pumped to the process pond. Discharge from the pond ceased at 5:10 am on December 26, 2022.

Water from the stormwater pond flows into a ditch system that was part of the historic mining activities. This ditch system is part of the wetland/surface waters permitted to be impacted by the mining operations. Monitoring stations were established to determine if there were any offsite impacts. Attached as Figure 1 is a map illustrating the location of the sampling points. Additionally, the permitted Figure 2 – Plant Site layout provides the location of the stormwater pond by the plant site and the flow direction of the impacted ditches.

An Alum drip was placed in the ditch to assist with cleaning up the water. The following sampling locations are currently being sampled:

- Ditch – this location is upstream of the alum tote to characterize the water in the ditch
- Ditch Crossing – the ditch as a small crossing to the ditch to the north
- Location 1 and Location 2 – these are both downstream of the ditches.

Location 4 and 5 – Not yet sampled. As water quality is within state water quality parameters (< 29 NTU) at Locations 1 and 2, Locations 3 and 4 have not been sampled. Should an increase in turbidity be noted in Locations 1 and 2, then sampling will be initiated in these two locations.

		Stormwater Pond	Ditch	Ditch Crossing	Location 1	Location 2	Location 3	Location 4
12/25/2022	PM	300	NS	NS	3.9	Dry	NS	NS
12/26/2022	AM	268	NS	NS	1.7	Dry	NS	NS
12/26/2022	PM	-			2.3	Dry	NS	NS
12/27/2022	AM	-			2	Dry	NS	NS
12/27/2022	PM	-	68	57		Dry	NS	NS
12/28/2022	AM	-				Dry	NS	NS
12/28/2022	PM	-				Dry	NS	NS
12/29/2022	AM	-	104	49	2.4	Dry	NS	NS
12/29/2022	PM	-	69	46	3.1	Dry	NS	NS

The ditch and ditch locations are the only areas that show elevated levels of turbidity. The down stream stations remain below 5 NTU.

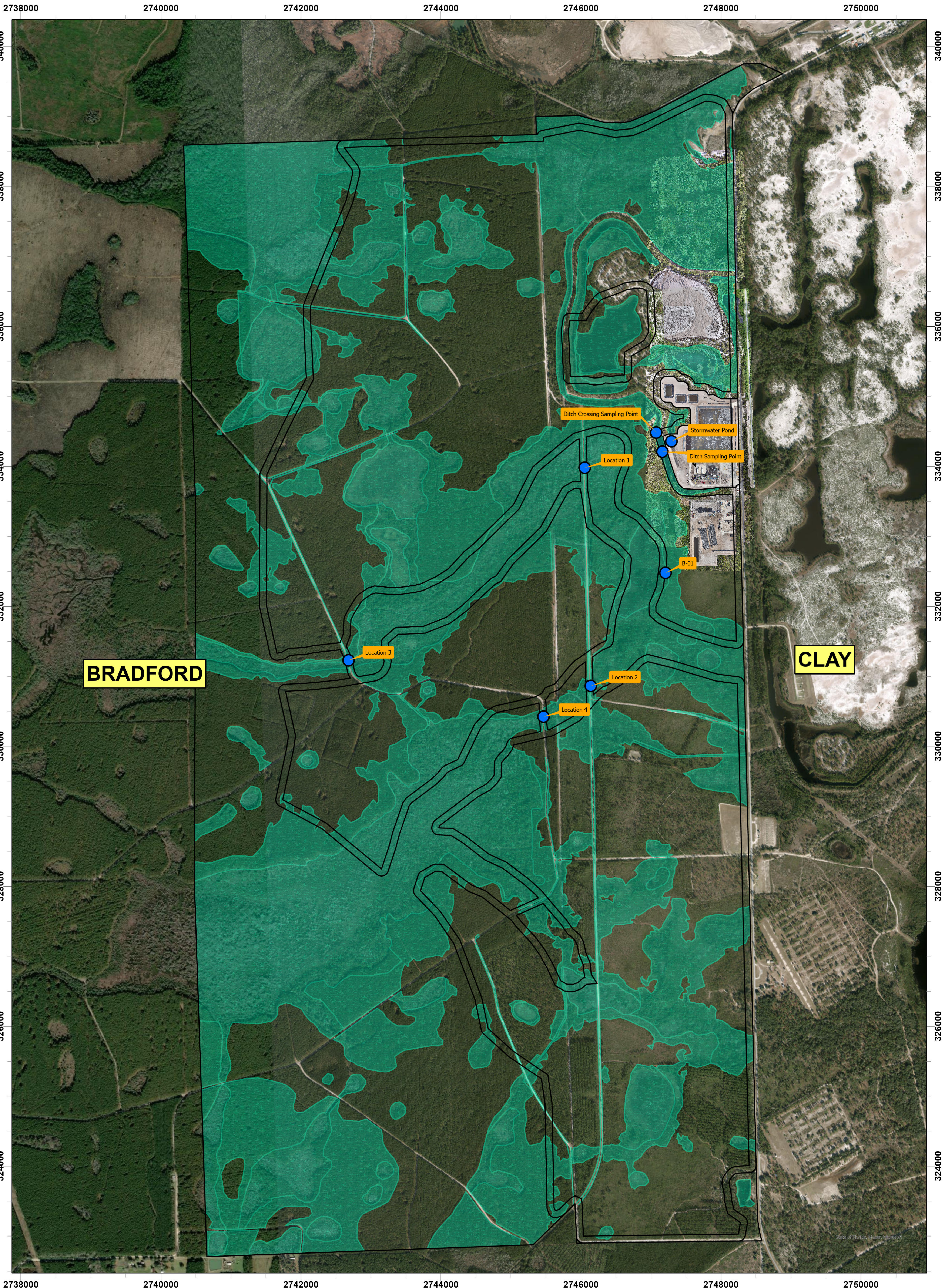
The Mining and Mitigation Program and NE District was notified by email on December 26, 2022. The State Warning Point (Incident No. 2022-10559) was contacted on December 26, 2022 via phone and a report was submitted to the Department's Pollution Notice website.

An action that has been implemented includes an addition to the the startup checklist to include a verification of flow control and documentation of the mill. A complete Root Cause Analysis (RCA) will be conducted on this incident. Should you have any questions regarding the attached, please do not hesitate to contact me at 904.263.8592.

Sincerely,

Connie Henderson
Environmental Manager

c: Herndon Sims, DEP NE District

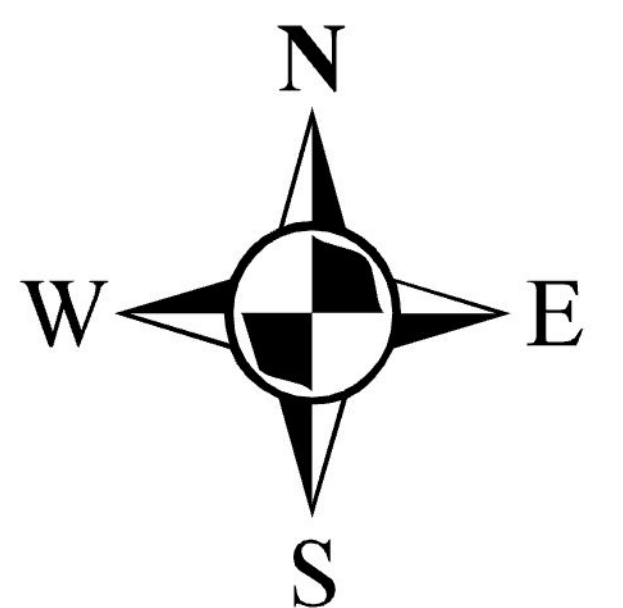


Legend

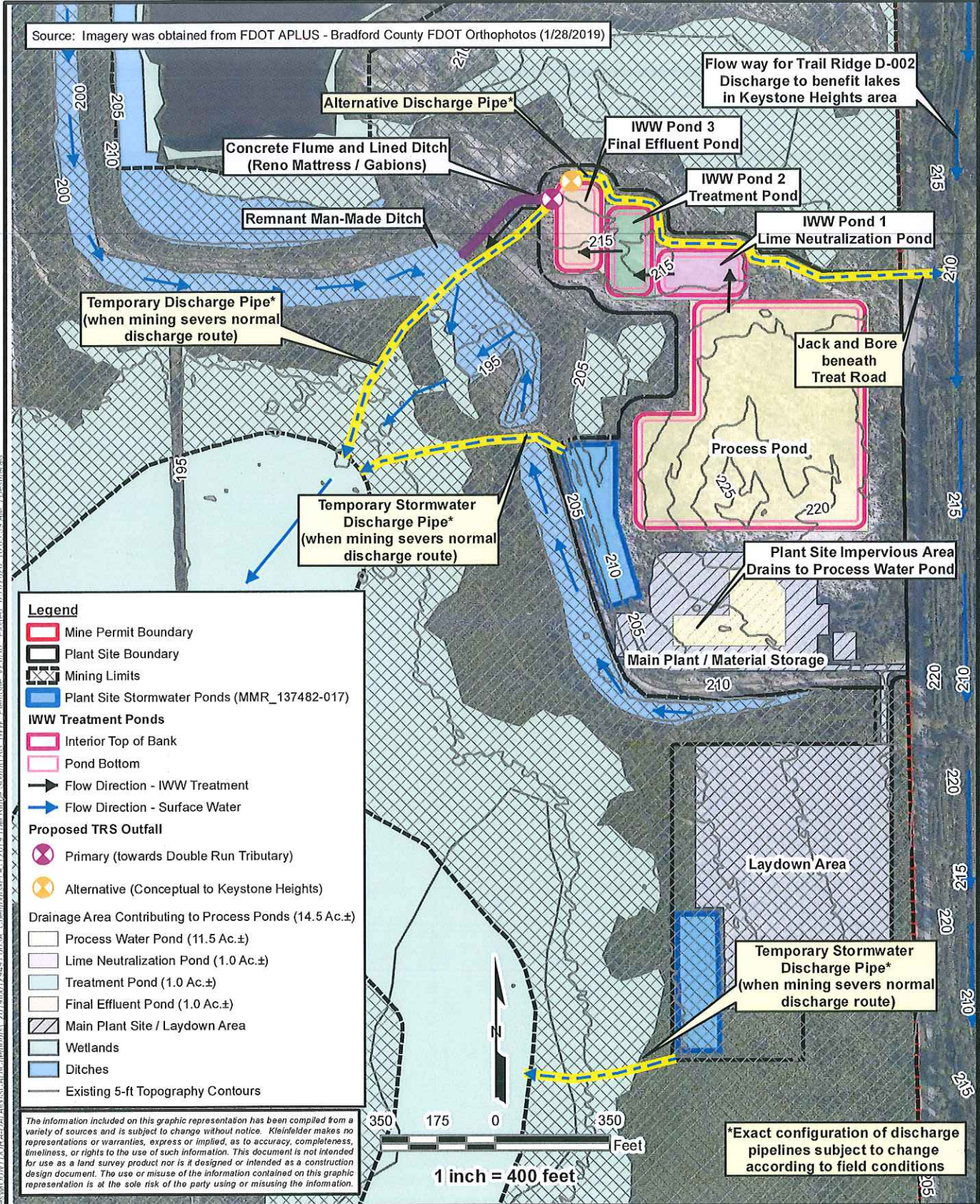
- Mine Boundary
- Pre-Mining Wetlands
- Water Sampling Locations

Trail Ridge South Mine - Figure 1
 Water Quality Sampling Locations

Date: 12/29/2022
 Author: SJR
 Scale: 1:7,000



Source: Imagery was obtained from FDOT APLUS - Bradford County FDOT Orthophotos (1/28/2019)



- Legend**
- Mine Permit Boundary
 - Plant Site Boundary
 - Mining Limits
 - Plant Site Stormwater Ponds (MMR_137482-017)
 - IWW Treatment Ponds**
 - Interior Top of Bank
 - Pond Bottom
 - Flow Direction - IWW Treatment
 - Flow Direction - Surface Water
 - Proposed TRS Outfall**
 - Primary (towards Double Run Tributary)
 - Alternative (Conceptual to Keystone Heights)
 - Drainage Area Contributing to Process Ponds (14.5 Ac.±)**
 - Process Water Pond (11.5 Ac.±)
 - Lime Neutralization Pond (1.0 Ac.±)
 - Treatment Pond (1.0 Ac.±)
 - Final Effluent Pond (1.0 Ac.±)
 - Main Plant Site / Laydown Area
 - Wellands
 - Ditches
 - Existing 5-ft Topography Contours

The information included on this graphic representation has been compiled from a variety of sources and is subject to change without notice. Kleinfelder makes no representations or warranties, express or implied, as to accuracy, completeness, timeliness, or rights to the use of such information. This document is not intended for use as a land survey product nor is it designed or intended as a construction design document. The use or misuse of the information contained on this graphic representation is at the sole risk of the party using or misusing the information.

PROJECT NO. 00129491.003A
 DRAWN: 7/31/2020
 DRAWN BY: TRD
 CHECKED BY: DJH
 FILE NAME: TRS_IWW_PlantSite_v2.mxd

**Plant Site
Layout**

Trail Ridge South
The Chemours Company FC, LLC
Bradford and Clay Counties, FL

FIGURE
2

Document Path: \\kleinfelder.com\Shares\W\UNTDORP\DATA\GIS\CAD\CHEMOURS\2016010129491.003A_Chemours-FL_CAD\IWW_PlantSite_v2.mxd; Plotter: 7/31/2020 10:03:36 AM; IDesmarais